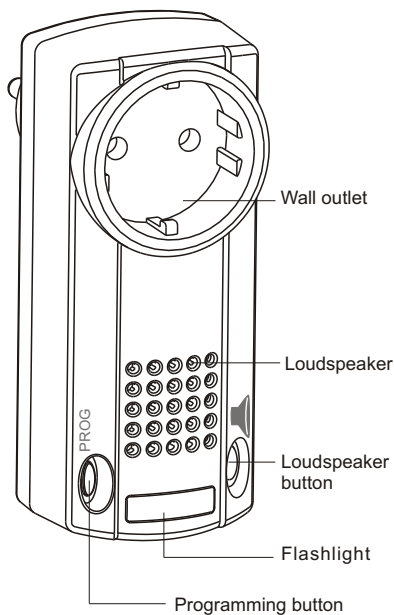
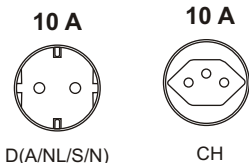


Models



RCP04E5001-11	868.30 MHz	D
RCP04E5001-15	868.30 MHz	CH

Max. Contact load of sockets:



Scope of Delivery

Wall outlet radio gong RCP04, operating instructions

Safety Advice



Please read these instructions carefully before using the device!

We do not accept any liability for personal injury or damage to property caused by incorrect handling or non-observance of the safety instructions!

Observe the valid laws and regulations as well as the manufacturer's instructions for the devices to be operated!

Attention! Observe the admissible supply voltage and the maximum contact load of the wall outlet (see „Technical Details“)!

Do not plug one Plug-In Radio Bell into another.

The Plug-In Radio Bell is only de-energized when it is disconnected from the mains supply. The Plug-In Radio Bell must be easily accessible.

Have malfunctioning devices checked by the manufacturers!

Do not open the appliance's casing!

Do not make any unauthorized alterations or modifications to the unit!

IMPORTANT! The device has an internal overload protection that switches off the socket insert permanently in case of improper loads. The doorbell function is not affected and will continue to work.

Intended Use

The device may only be operated indoors and only as a radio bell and as wall outlet for mains consumer load or low voltage consumer load.

The manufacturer will not be liable for damage caused by improper or inappropriate use.

Function

The Plug-In Radio Bell RCP04 receives Easywave transmission codes from programmed hand transmitters or wall transmitters. Once the transmission button is pressed, a ring tone will play and/or a light will begin to flash.

The wall outlet of the radio bell can be used as a mains output socket for any electric device.

A total of 32 transmission codes can be programmed into the unit. A specific ring tone and ring tone length can be allocated to each transmission code.

Three different melodies are available as ring tones: Westminster, March, Ringing Bell

The ring tone length can be set at a maximum of 60 seconds, which is defined by the number of repetitions of the melody.

Five different combinations of gong volumes and flashing lights can be selected:

- Quiet and flashing light
- Loud and flashing light,
- Muted (only flashing light),
- Quiet without flashing light,
- Loud without flashing light.

From the factory, the radio bell is set to the march melody and at the volume "quiet / flashing light".

Start Up

1. Plug the radio bell into any wall outlet, you can hear an acknowledgement signal.
2. Transmit the transmission codes of the transmitter to the radio bell (see section "Ring tone and ring tone length select/change").

Caution: Make sure that there is no interference with the wireless connection. Do not mount the device in a distribution box, metal casings or in direct proximity to large metal objects.

Select/Change Ring Tone and Ring Tone Length

You can specify a ring tone melody and ring tone length for each transmitter button. Select the desired settings on the radio bell and confirm by learning the transmission code (step 1 to step 3).

Please note that subsequent changing of the ring tone and the ring tone length for transmission codes already learned is not possible. The transmission code for which you would like to change the settings, must be deleted (see section "Delete transmission code") and memorized again with new settings.

1. Press the programming button of the radio bell (approx. 5 seconds). The programming button will flash slowly and the device will play an acknowledgement signal.

Memorize the transmission code now, if you want to use the radio bell with factory settings (see step 3).

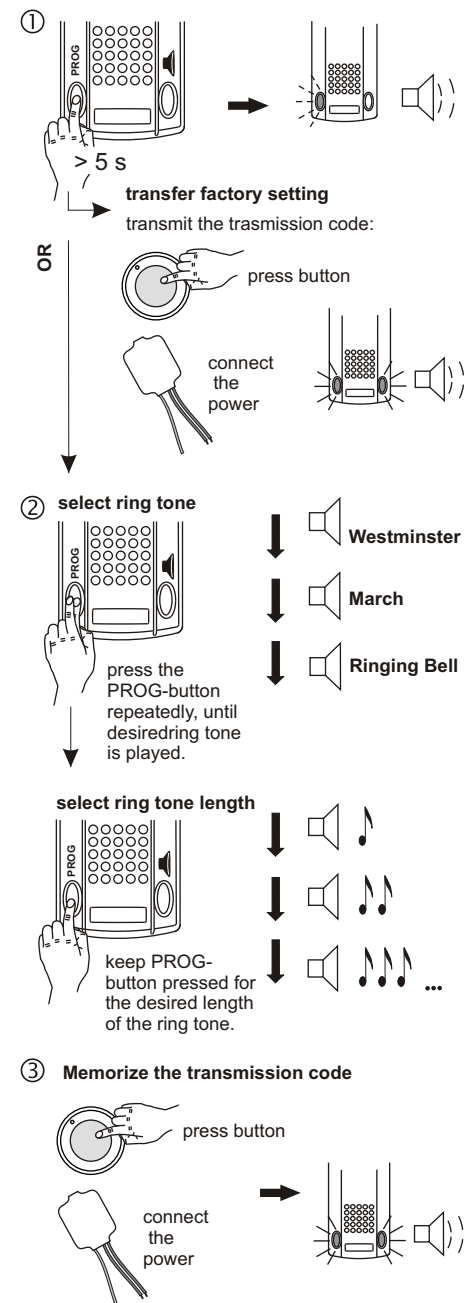
Continue with step 2 and step 3, if you would like to select another ring tone or change the ring tone length.

2. Select the desired ring tone by repeated pressing of the PROG button.

You can change the ring tone length after the ring tone melody is finished. To do this press the PROG button, until the desired ring tone length is reached.

3. Now press the transmission button, for which you want to use these settings or connect the RTS17 to the voltage. The device will confirm that the transmission code has been programmed successfully by playing an acknowledgement signal and a brief flashing of the programming and loudspeaker button. Once completed, the device will automatically switch back to operation mode.

Repeat step 1 to 3 to program additional transmission codes.



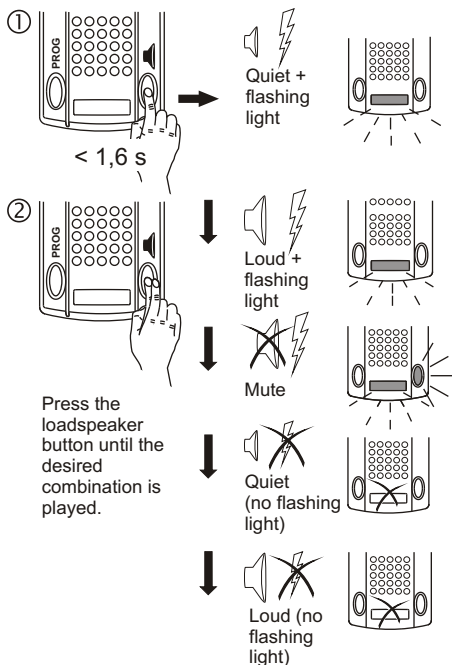
Note: In case no transmission code is confirmed within a period of 30 seconds during programming, the radio bell will automatically switch back to operation mode.

Any programming operation can be canceled by pressing the loudspeaker button.

In case an additional transmission code is received and all 32 memory positions have been used up a warning signal will play for about four seconds. No additional transmission code will be programmed. The device will switch back to operation mode.

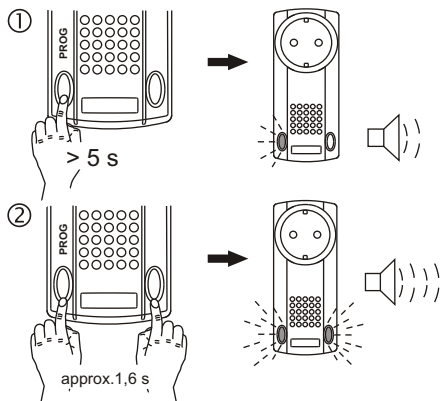
Changing Ring Tone Volume / Switching Flashlight On and Off

- Briefly (< 1.6 seconds) press the mode button. The march melody will play.
 - Press the loudspeaker button several times while the ring tone is being played. The device will switch to the next volume/flashlight option.
- If you do not press the loudspeaker button, combination of volume and flashlight will be accepted automatically after ring tone melody has stopped playing.

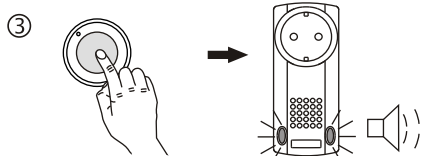


Delete Transmission Code

- Keep the PROG button pressed for approx 5 seconds. The PROG button will flash slowly and you will hear an acknowledgement signal.
- Press the PROG and mode button at the same time. You will hear an intermittent signal tone and both buttons will flash quickly.
- Press the transmission button of the transmission code you would like to delete until a brief acknowledgement signal is played and both buttons light up. The transmission code has been deleted and the device will automatically switch back to operational mode.



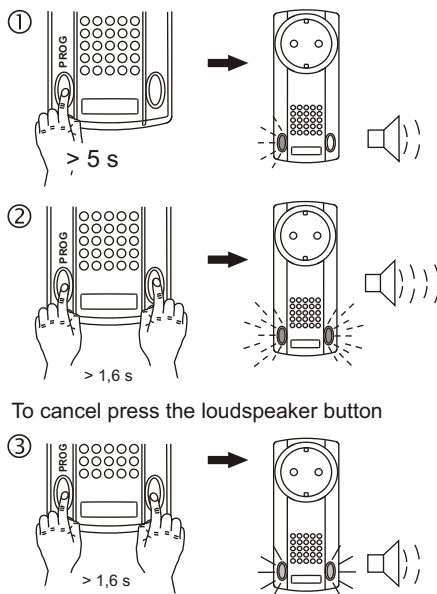
To cancel press the loudspeaker button



Reset to Default Settings

Attention! With a RESET all memorized transmission codes as well as all relevant settings are deleted and factory settings are activated.

- Press the programming button of the radio bell (approx. 5 seconds). The programming button will flash slowly and the device will play an acknowledgement signal.
- Press the PROG and mode button at the same time. You will hear an intermittent signal tone and both buttons will flash quickly.
- Press the PROG and loudspeaker button until a brief acknowledgement signal is played and both buttons light up, and the radio gong will switch back to its default settings.



Technical Details

Frequency:	868.30 MHz
Modulation:	FSK
Radio channels:	1
Range:	up to 150 m under favourable open field conditions
Operating voltage:	230 V AC / 50 Hz
Current consumption:	max. 7 mA
Power consumption:	0,3 W Stand by
Gong volumes:	Distance 30 cm: quiet: 75 dB loud: 82 dB
Protective type:	IP 20
Operating temperature:	-20°C to +35°C
Max. relative air humidity:	60%
Mains output:	Power plug non switchable
Max. contact load:	D(A/NL/S/N) Schuko 10 A / 230 V AC CH 10 A / 230 V AC
Dimensions (HxWxD)	122 x 50 x 38,3 mm
Weight:	approx. 190 g

General Information

Disposal

Waste electrical products should not be disposed of with household waste!

Dispose of the waste product via a collection point for electronic scrap or via your specialist dealer.

Put the packaging material into the recycling bins for cardboard, paper and plastics.

Warranty

We will remedy defects on the device based on material or production errors within the statutory warranty period or exchange the device.

Any unauthorized tampering with, or modifications to, the product shall render this warranty null and void.

Conformity

Hereby, ELDAT GmbH declares that the radio equipment type RCP04 is in compliance with Directive 2014/53/EU.

The full text of the EU declaration of conformity is available at the following internet address: www.eldat.de

Customer Service

If the device does not work properly despite proper handling or in case of damage, please contact your retailer or the manufacturer:

ELDAT GmbH

Im Gewerbepark 14
15711 Königs Wusterhausen
Germany

Phone: + 49 (0) 33 75 / 90 37-310

Fax: + 49 (0) 33 75 / 90 37-90

Internet: www.eldat.de

E-Mail: info@eldat.de

