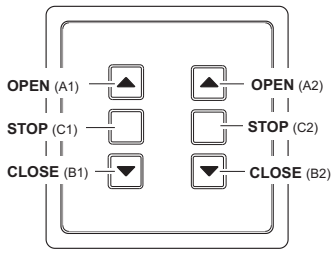


Model



RTS14E5002-01 OPEN/STOP/CLOSE  
3 button operation

Technical Data

Frequency:	868.3 MHz
Radiated power:	0,12 mW
Modulation:	FSK
Coding:	Easywave
Power supply:	1x 3-V-battery, CR2032
Operating temperature:	-20 °C to +60 °C
Range:	free-field: approx. 150 m buildings: approx. 30 m
Degree of protection:	IP30
Dimensions:	80 x 80 x 10 mm
Weight:	approx. 47.0 g incl. battery

Package Content

Transmission module, 1x battery CR2032, mounting frame, attachment set, op. instruction

Intended use

Only use the Radio Wall Switch RTS14 in dry rooms to switch Easywave wireless controls. The manufacturer shall not be liable for any damage caused by improper or non-intended use.

Safety Advice



Before using the Radio Wall Switch, carefully read through the operating instructions!

Note also the operating instructions of the radio control(s)!

The Radio Wall Switch should only be operated within sight of the devices to be controlled! Otherwise persons could be placed in danger!

Have faulty Radio Wall Switch checked by the manufacturer!

Do not make any unauthorized alterations or modifications to the Radio Wall Switch!

Function

The RTS14 is a wireless switch transmitter for surface mounting in dry rooms.

The Easywave code is transmitted by pressing the switch and the connected Easywave wireless control switched.

Start-Up

1. Screw or stick the mounting frame to the installation site with the help of the screws and dowels or the adhesive pads.

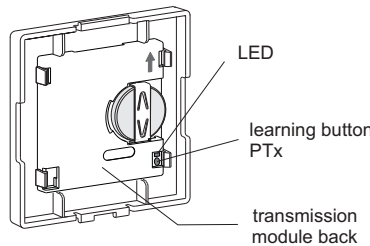
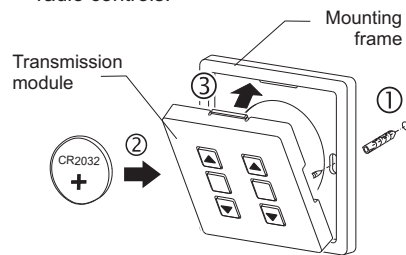
**Caution:** Make sure that there is no interference with the wireless connection. Do not mount the device in a distribution box, metal casings, in direct proximity to large metal objects, on the floor or close to it.

2. Insert the enclosed battery.

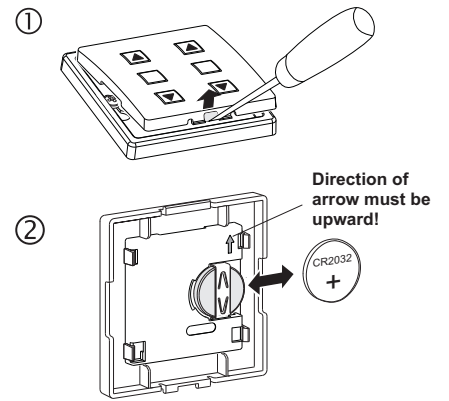
**Make sure the Polarity is correct!**

3. First snap the transmission group in on the top and then on the bottom of the mounting frame. **The arrow on the back of the transmission module must point upwards.**

4. Register the transmission code with the wireless control. For this read the operating instructions supplied with the radio controls.



3. Re-insert the transmission group into the mounting frame.



**Note:** The transmitter's coding is preserved even if there is no voltage supply. You do not need to re-register the code with the wireless control after a battery change.

Disposal

**Waste electrical products and batteries not be disposed of with household waste!**

Dispose of the waste product via a collection point for electronic scrap or via your specialist dealer.



Dispose of used batteries in a recycling bin for batteries or via the specialist trade.



Put the packaging material into the recycling bins for cardboard, paper and plastics.

Warranty

Within the statutory warranty period we undertake to rectify free of charge by repair or replacement any product defects arising from material or production faults.

Any unauthorized tampering with, or modifications to, the product shall render this warranty null and void.

Conformity



Hereby, ELDAT EaS GmbH declares that the radio equipment type RTS14 is in compliance with Directive 2014/53/EU.

The full text of the EU declaration of conformity is available at the following internet address: [www.eldat.de](http://www.eldat.de)

Customer Service

If, despite correct handling, faults or malfunctions occur or if the product was damaged, please contact your retailer or the manufacturer.

ELDAT EaS GmbH

Schmiedestraße 2  
15745 Wildau  
Germany  
Phone: + 49 (0) 33 75 / 90 37-310  
Fax: + 49 (0) 33 75 / 90 37-90  
Internet: [www.eldat.de](http://www.eldat.de)  
E-mail: [info@eldat.de](mailto:info@eldat.de)

Troubleshooting

If the wireless control does not react to the wireless wall switch:

- Exchange the battery.
- Check that the wireless connection at the installation site is not impaired between the Radio Wall Switch and the wireless control.
- Re-register the transmission code with the wireless control.
- Other wireless devices using the same frequency or working in direct proximity may interfere with the device.

Replacing the Battery

1. Carefully lever off the transmission group out of the mounting frame on the bottom edge.
2. Replace the battery. Only use batteries of the type CR2032.  
**Make sure the polarity is correct!**