

RCJ37 Flush-mounted receiver

12-24V 2x changeover potential-free



The RCJ37 flush-mounted receiver is primarily used to expand existing systems.

With its two potential-free relay contacts, a wide variety of systems can be expanded with a wireless interface. Converting a garage door opener is just as easy as integrating Easywave transmitters into house call systems.

The RCJ37 is powered by 12-24 V AC or 12-32 V DC and can be programmed with up to 128 transmission codes.

The flat design facilitates installation in flush-mounted sockets or behind switches.

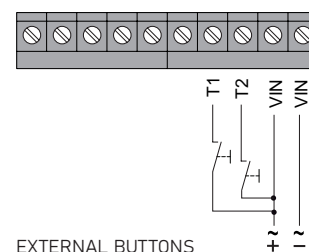
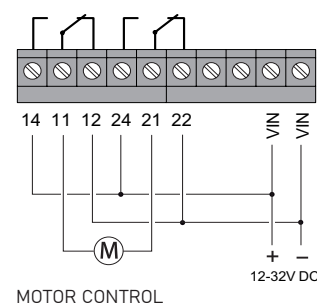
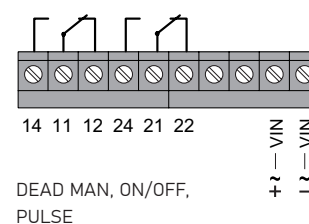


RCJ37E5002A0-K

Technical specifications

Coding	Easywave Up to 128 transmitters can be programmed.
Frequency	868.30 MHz
Channels	2
Power supply	12-24 V AC / 12-32 VDC
Power consumption	0,18 W standby 0,6 W max. without load
Operating modes	DEADMAN (max. 36 seconds) ON/OFF (2-button operation) PULSE (1 second) MOTOR CONTROL (UP/DOWN) MOTOR CONTROL (UP/STOP/DOWN)
Inputs	2 external buttons
Outputs	2 potential-free relay contacts (changeover)
Maximum contact load	
- AC	120 V/1A/62 VA
- DC	50 V/1A/30 W
Operating temperature	-20 °C to +60 °C
Dimensions (W/L/H)	43/42/17,5 mm

Wiring diagram



Scope of delivery

- Flush-mounted receiver
- Operating manual

Models

Product number	Description
RCJ37E5002A0-K	Flush-mounted receiver, Easywave, 12-24VAC / 12-32VDC, 2x changeover, potential-free, 2 button inputs