

## RTS22 Radio wall switch modular

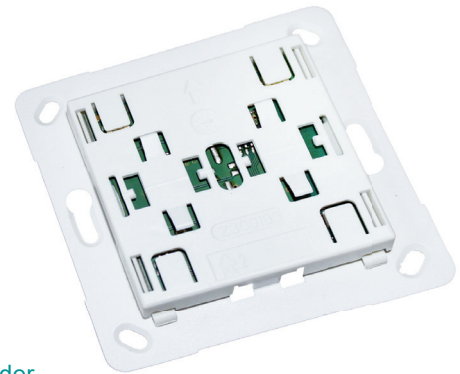
## Format 55

The RTS22 wall switch from the Format 55 range is a battery-powered Easywave transmitter. The function of the wall switch is defined by combining it with different rockers.

The radio switch can be integrated into cover frames with a cut-out dimension of 55 x 55 mm produced by various manufacturers (see compatibility list).

The transmitter module is combined with the desired rocker, simply clicked into the cover frame and is immediately operational. It can then be mounted on the wall using either adhesive pads or screws.

The RTS22 is generally used as a light switch to turn lights ON or OFF with a 2-button operation as well as to control roller shutters.



RTS22E5002A11-02K

Please order rockers separately!

### Technical specifications

Coding	Factory coding with Easywave telegram
Frequency	868.30 MHz
Channels	1 or 2
Range	typically 150 m in good free-field conditions
Power supply	1x 3V battery, CR2032
Operation	transmission lasts as long as the button is pressed (maximum 36 seconds)
Operating temperature	-20 °C to +60 °C
Dimensions (w/l/h)	rocker: 55/55/9 mm mounting plate: 71/71/1.8 mm
Weight	34 g (including battery)
Color	white similar to RAL 9003 anthracite gray similar to RAL 7016 lacq. aluminum similar to RAL 9006

### Models Rockers



1x ON/OFF  
RTS22-ACC-02-xxP



1x ON/OFF  
RTS22-ACC-03-xxP

### Scope of delivery

- Transmitter module including battery
- Mounting plate
- Adhesive pad
- Operating manual

### Accessories (optional)

RTS22-ACC-01-01P	mounting plate, white
RTS22-ACC-05	Cover frame single, Format 55



RTS22-ACC-01-01P



RTS22-ACC-05

### Models

Product numbers	Description
RTS22E5002A11-02K	Wall switch for single rocker, Easywave, Format 55 / Format B6
+ RTS22-ACC-02-02P	Single rocker, 1xON/OFF, Format 55, for RTS22, white
+ RTS22-ACC-02-24P	Single rocker, 1xON/OFF, Format 55, for RTS22, anthracite
+ RTS22-ACC-02-25P	Single rocker, 1xON/OFF, Format 55, for RTS22, lacquered aluminum
+ RTS22-ACC-03-02P	Single rocker, 1xUP/DOWN, Format 55, for RTS22, white
+ RTS22-ACC-03-24P	Single rocker, 1xUP/DOWN, Format 55, for RTS22, anthracite
+ RTS22-ACC-03-25P	Single rocker, 1xUP/DOWN, Format 55, for RTS22, lacquered aluminum